



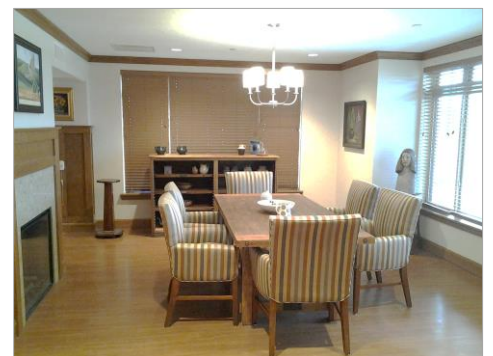
February 20, 2017

Dear Fair Haven Family and Friends:

It was just a little over one year ago that we broke ground at Fair Haven for the first phase of its monumental Master Plan. On February 7 and 8, the current residents residing in assisted living accommodations moved into their new assisted living apartments within their households! My thanks to the families, associates, residents, and everyone who helped make this transition as smooth as possible. I enjoyed meeting some of you for the very first time. We learned a lot during the first move and are now deep into planning the moves of our SCALF residents, short-term stay residents and others within the next few weeks. When I write to you in March, all eight new households should be open, occupied and operational, with core renovations in full swing! The households are truly breathtaking, and worth every challenge we have had to overcome. Thank you all for your continued prayers, and your kindness and patience!

February Spotlight... **Construction Progress**

Inside the New Assisted Living Households



More Inside the New Assisted Living Households



Inside the Long Term Care Households



I look forward to sharing with you again next month as our journey continues. Thank you for your continued support of Fair Haven.

Very truly yours,

Christopher W. Tomlin
President & CEO
Methodist Homes of Alabama & Northwest Florida