



# *Wesley Manor: Redefining Home*

## Reframing, Renewing & Renovating Together

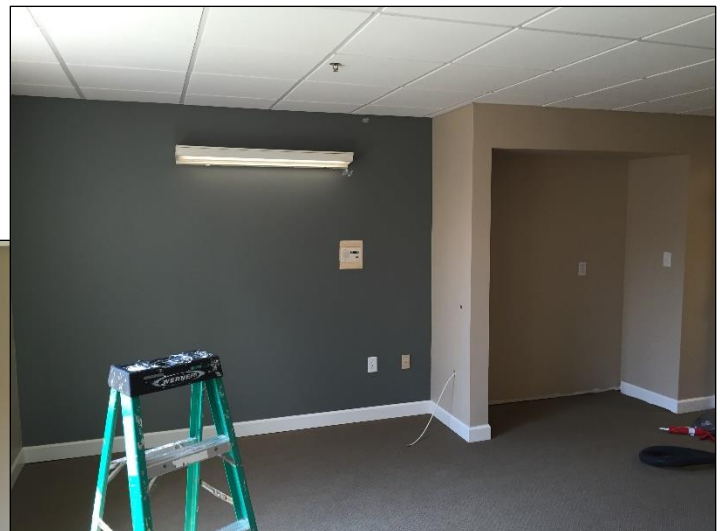
July 20, 2016

Dear Wesley Manor Family and Friends:

The progress at Wesley Manor is spreading widely and quickly! If you have visited the community in the past several days, you have no doubt noticed the “wood screen” which has been affixed to the front façade. When completed with the green spaces between the wood screened areas, Wesley Manor will feature such a refreshing appeal! And of course in addition to the ongoing work in the short term stay rehabilitation center, we have now begun the interior remodeling of the “South Wing”. How exciting it will be to see these areas converted into the most modern of spaces for the residents of Wesley Manor!

These are such impressive changes and additions to Wesley Manor’s campus, and we are so blessed to be bringing this dream to reality. As I wrote to you last month, these new environments will assist us in creating an elevated quality of life in so many ways. I look forward to sharing more with you on that topic in the months to come. In the meantime, and by request, I will dedicate my correspondence to you every other month to a full pictorial review of the construction progress. We remain on schedule at Wesley Manor, with completion of the rehabilitation in the month of September!

### July Spotlight... **Construction Progress**



An amazing transformation of resident rooms on South Wing



Artist Rendering – Front Entrance

Beautiful new wood screen  
façade updates have begun



Construction on the new  
Rehabilitation household



I look forward to sharing with you again next month as our journey continues. Thank you for your continued support of Wesley Manor.

Very truly yours,

Christopher W. Tomlin  
President & CEO  
Methodist Homes of Alabama & Northwest Florida