



Redefining Home

January 20, 2017

Dear Wesley Place on Honeysuckle Family and Friends:

Happy New Year! We began 2017 with great excitement over the December opening of The Rehab Inn as well as what is to come in the early part of this new year at Wesley Place on Honeysuckle, and it seems to be growing with each passing day! The construction efforts have been underway for almost a full year, and we are so fortunate that we have not experienced significant obstacles or challenges which could not be overcome. Further, we have been so blessed throughout this wonderful transition by the patience and understanding shown by everyone involved with Wesley Place on Honeysuckle, despite the inconveniences which we have experienced.

Thank you to everyone – residents, families, visitors and associates alike – for such wonderful spirit and support of the Methodist Homes vision.

January Spotlight... **Welcome Home!**

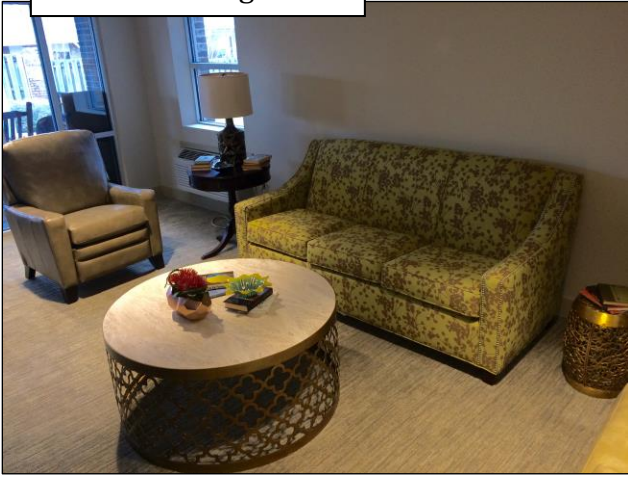
As you are aware, Wesley Place on Honeysuckle opened The Rehab Inn under the household model of care, and will also transition the Sanders Dementia Care area into two new households. These households will truly be a haven of home for the elders and guests who receive care in these environments, as we shed ourselves of the institutional trappings which have plagued elder care for so many decades. I know we all look forward to celebrating this monumental shift, as we see and experience for ourselves!

Residents and associates who have experienced The Rehab Inn express a common reaction. As one guest stated, “[t]he staff members here are so warm and friendly and have been very helpful during my stay. A+ across the board.” And as Household Coordinator Mollie Adkison reports, “[t]he environment is so warm and welcoming. It has a calming factor unlike anything I have ever experienced in this type of setting. Our guests love it and feel at home. We love to spoil them!”

Our transitions to the neighborhood model are nearing conclusion on the Samford and South wings, and are soon set to begin on the Martin Wing. Years of planning by the Board of Trustees and associates are now culminating into very focused opening and transition efforts which include associate orientation and trainings, furnishing installations, artwork installations and equipping the new environments with the necessary homewares, just to name a few! All of these readiness measures are specifically designed in furtherance of what I related to you as our goal so many months ago...Redefining Home!

I request that you please continue to pray for guidance, wisdom, strength and the Lord’s continued blessings as we march forward in our transitions.

Sanders Living Room



Neighborhood Living Room



Neighborhood Kitchen & Dining



Neighborhood Living Room



I look forward to sharing with you again next month as our journey continues. Thank you for your continued support of Wesley Place on Honeysuckle.

Very truly yours,

Christopher W. Tomlin  
President & CEO  
Methodist Homes of Alabama & Northwest Florida